

TSI AIRASSURE PM2.5 INDOOR AIR QUALITY MONITOR ENABLE AND DISABLE DISPLAY INSTRUCTIONS

APPLICATION NOTE PM2.5-004 (US)

The TSI® AirAssure™ PM2.5 Indoor Air Quality Monitor display can be configured to be enabled or disabled if the instrument firmware is at revision 1.3 or higher. This will require a micro USB cable (not provided), personal computer and a Terminal Emulation program. Follow the steps below for setup instructions.

Separating Cover from Base

To access the USB connector, remove the cover of the monitor by pressing fingers firmly on bottom of device cover, squeeze, and pull outwards.




TSI and TSI logo are registered trademarks of TSI Incorporated.
AirAssure is a trademark of TSI Incorporated.



Attaching USB Cable

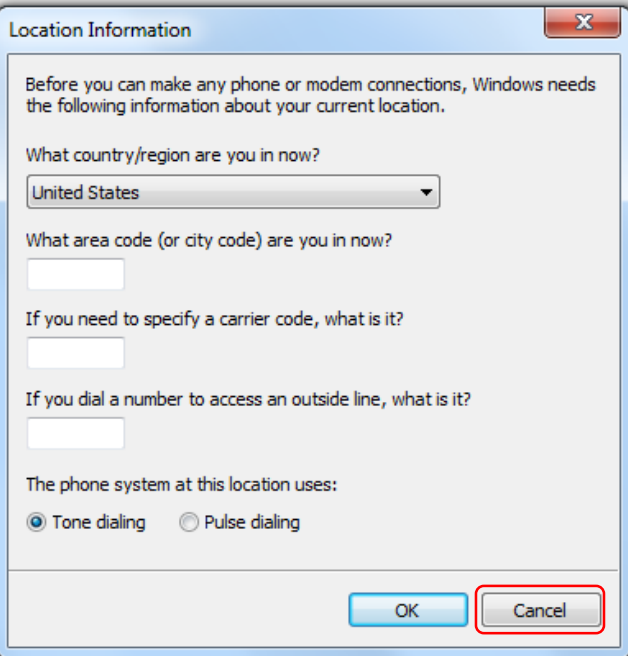
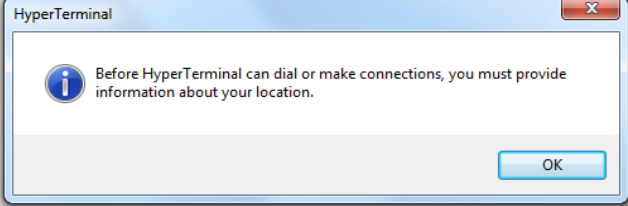
Connect the unit to your personal computer using a Micro USB cable (not provided). The USB connector is on the left-hand side of the device.

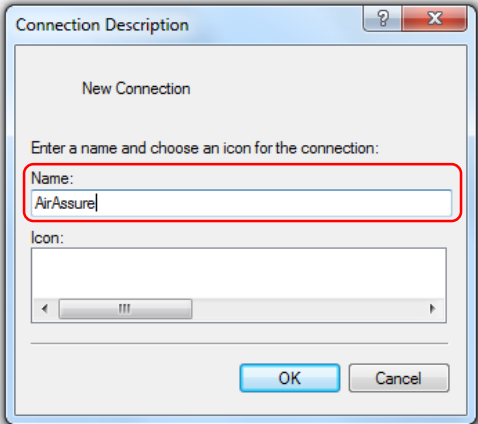
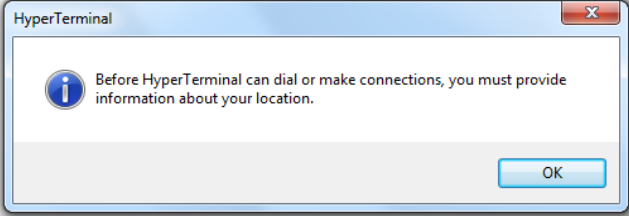

	CAUTION
	Use caution when plugging in cable, as excessive perpendicular force may damage the connection.



Terminal Emulation Program and COM Port Setup

A terminal emulator program such as HyperTerminal can be used to establish serial communications to the AirAssure monitor.

<ol style="list-style-type: none">1. Run the HyperTerminal program.2. HyperTerminal may prompt you to enter Location Information details such as area code, carrier code, or a number to access an outside line. Click Cancel without entering these details since they are not used for AirAssure monitor communications.	
<ol style="list-style-type: none">3. Click OK for the following HyperTerminal notification.	

<p>4. Enter a name (AirAssure) for Connection Description.</p> <p>5. Click OK.</p> <p>6. Click Cancel for Location Information, if prompted to do so again.</p>	
<p>7. Click OK for the following HyperTerminal notification.</p>	
<p>8. In the Connect To dialog box, enter the COM port number.</p> <p>9. Click OK.</p>	

10. To determine which COM port is being used, go into the **Device Manager** to view which COM port is selected when the USB cable is connected to the AirAssure monitor (USB Serial Port).

11. To view or edit **Port Settings**, double click on the selected COM port. The USB Serial Port connection is a virtual COM port running at:

Bits per second 115200

Data bits 8

Parity None

Stop bits 1

Flow control None

12. Click **OK** and close **Device Manager**.

13. In the **Connect To** dialog box, enter the COM port number.

14. Click **OK**.

15. Go back to the HyperTerminal window and set **Port Settings** under **Com Properties** to:

Bits per second 115200

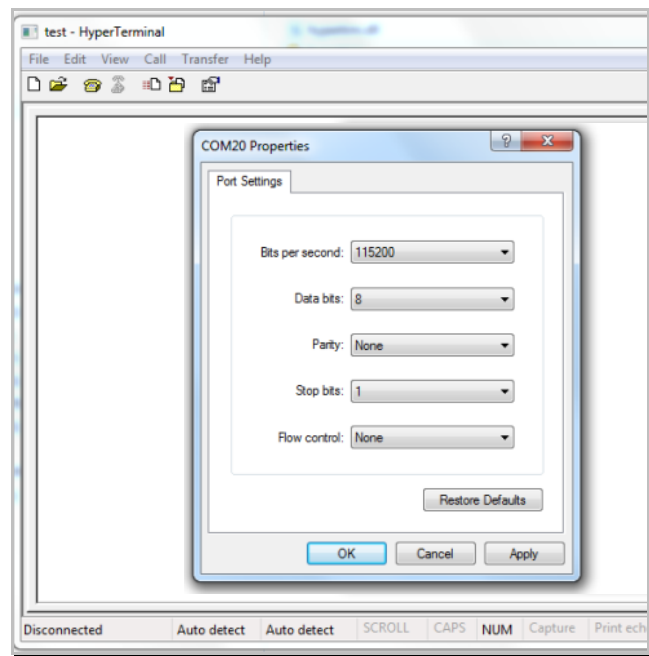
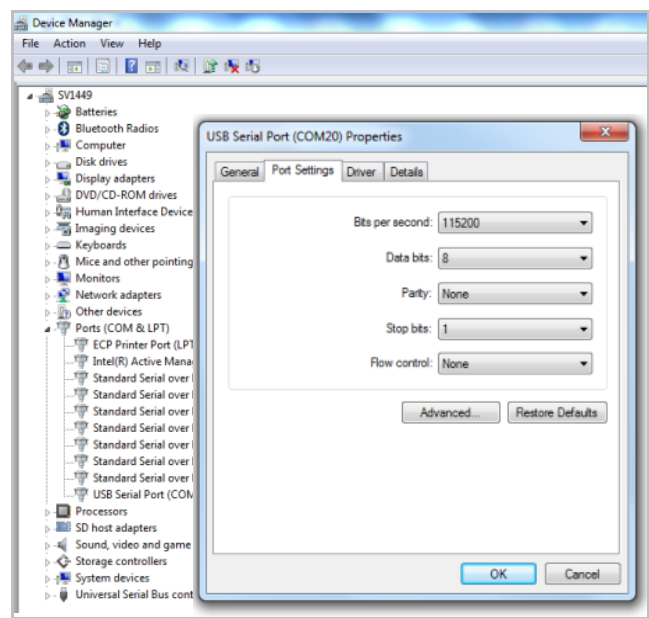
Data bits 8

Parity None

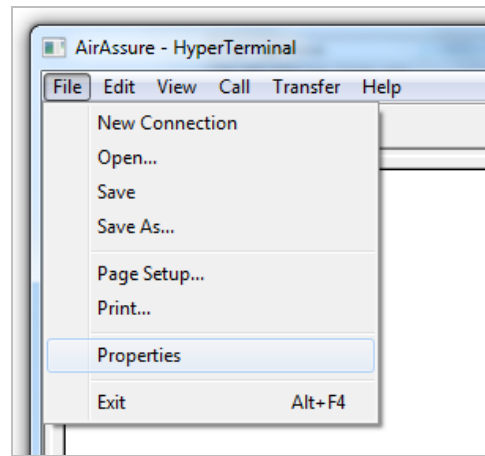
Stop bits 1

Flow control None

16. Click **OK**.



17. In HyperTerminal, click **File** and choose **Properties**.



18. Click on the **Settings** tab.

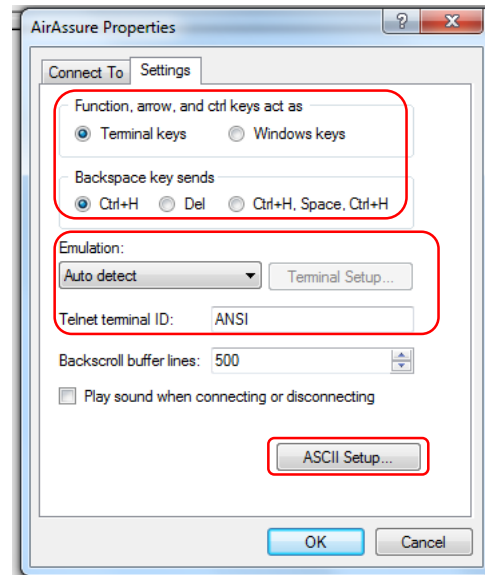
19. Verify the following are selected:

- **Terminal keys**
- **Ctrl+H**

20. Verify the following settings:

Emulation Auto detect
Telnet terminal ID ANSI

21. Click on **ASCII** set up.



22. Under **ASCII Sending**, place a check mark in these boxes:

- **Send line ends with line feeds**
- **Echo typed characters locally**

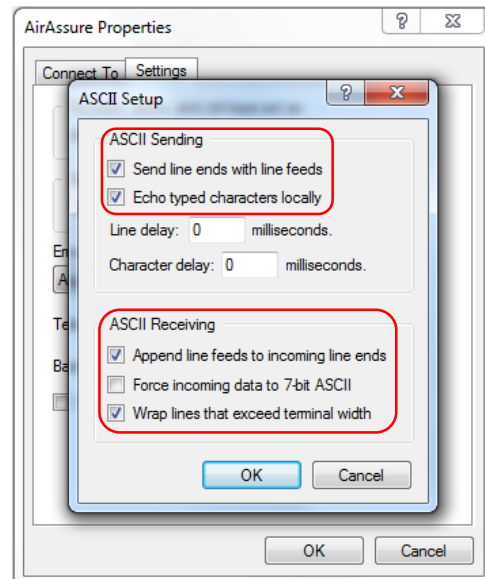
23. Under **ASCII Receiving**, place a check mark in these boxes:

- **Append line feeds to incoming line ends**
- **Wrap lines that exceed terminal width**

24. Click **OK**.

25. Click **OK** again to exit **Properties**.

26. **HyperTerminal** is now ready to communicate with the AirAssure monitor.

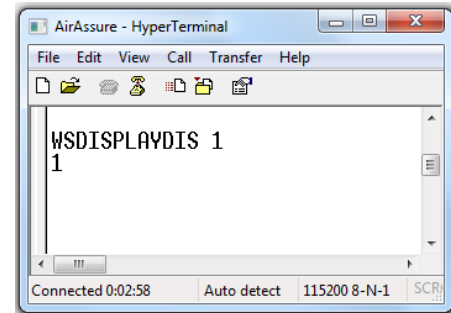


Disable AirAssure Display

1. Type the command **WSDISPLAYDIS 1** in the terminal emulator.
2. Press **Enter**.

The AirAssure monitor will respond **1** and its display will immediately go dark.

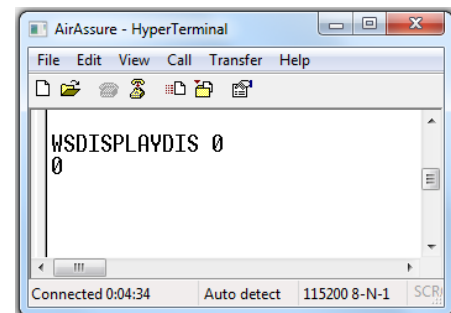
Note *AirAssure units that have the display disabled will illuminate full white for approximately one second after power is applied. This allows verification that power has been applied without removing the front cover.*



Enable AirAssure Display

1. Type the command **“WSDISPLAYDIS 0”** in the terminal emulator.
2. Press **Enter**.

The AirAssure monitor will respond **“0”** and its display will immediately illuminate.



UNDERSTANDING, ACCELERATED

TSI Incorporated – Visit our website www.tsi.com for more information.

USA	Tel: +1 800 874 2811	India	Tel: +91 80 67877200
UK	Tel: +44 149 4 459200	China	Tel: +86 10 8219 7688
France	Tel: +33 1 41 19 21 99	Singapore	Tel: +65 6595 6388
Germany	Tel: +49 241 523030		