

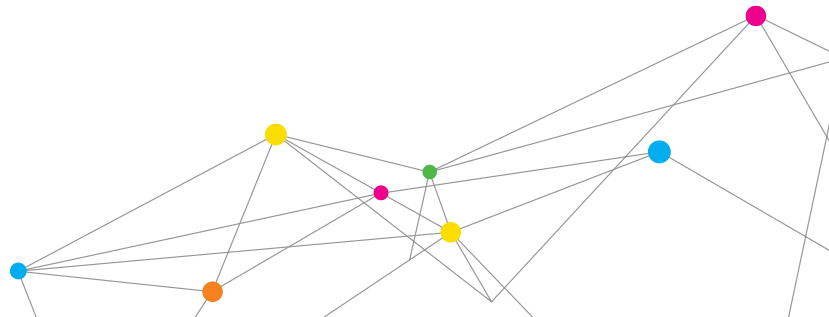
BIO-ACOUSTIC SIMULATOR

The TSI Bio-Acoustic Simulator provides daily audiometer verification. The device lets you perform daily audiometer checks without the need for a human test subject. The unit can be used as a portable tabletop unit or can be mounted on the wall.



Features and Benefits

- + Performs quick, easy audiometer testing to help ensure accurate patient assessments
- + Available in specialized versions designed to meet specific OSHA requirements
- + No need to use a human test subject to perform daily biological checks
- + Powered by battery or optional power adapter, dependent on application
- + Can be used as a portable tabletop unit or permanent wall-mount assembly
- + Compatible with manual, automatic and microprocessor audiometers for biological testing of earphones



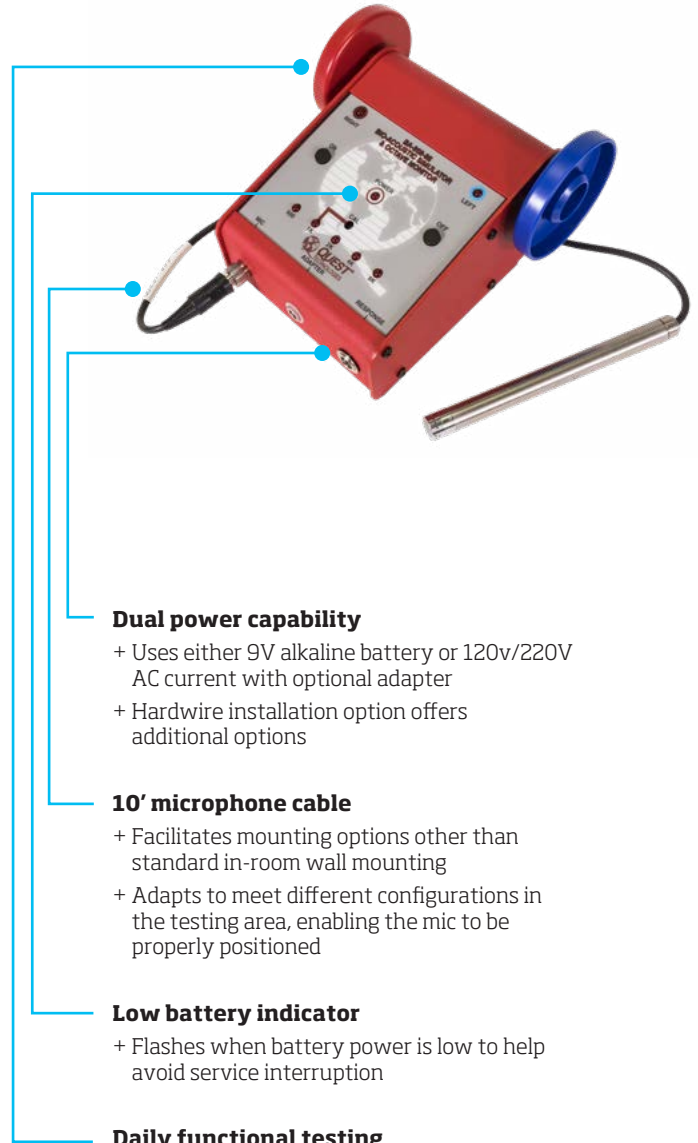
SPECIFICATIONS

BIO-ACOUSTIC SIMULATOR

Test Frequencies	125 Hz to 8 kHz
Background Test Levels (BA-202-25)	40 dB at 500 Hz and 1 kHz, 47 dB at 2 kHz, 57 dB at 4 kHz, and 62 dB at 8 kHz (per OSHA, Fed. Reg. March 8, 1983)
Background Test Levels (BA-202-27)	35 dB at 125 Hz, 25 dB at 250 Hz, 21 dB at 500 Hz, 26 dB at 1 kHz, 34 dB at 2 kHz, 37 dB at 4 kHz and 8 kHz
Calibration	60 dB HL +/- 1 dB at 1 kHz continuous tone with TDH-39, 49, or 50 earphone
Accuracy	Repeatable to within 2 dB when using an audiometer with a continuously variable HL control. When using automatic audiometers, the BA-202 will be repeatable within the HL step increments of the audiometer (usually 5 dB)
Transducers	Two electret microphones for checking earphones
Response Output	Normally open and normally closed relay contacts (SPDT 3 wire output)
Hysteresis	10 dB +/- 1 dB between ON and OFF indication for the LEFT/RIGHT earphone indicators when used with continuous tone input
Relay Specifications	250 mA current, 30 volts AC or DC, 20 million operations
Power	9-volt alkaline battery (Optional 120-volt or 220-volt power adapter) Low battery indicator when used in battery mode
Size	6.8" x 6.5" x 4.2" (173 x 165 x 107 mm)
Weight	1.63 lbs. (739 g); not including the remote microphone
Markings	CE

Specifications are subject to change without notice.

Quest is a trademark, and TSI and the TSI logo are registered trademarks of TSI Incorporated.



Dual power capability

- + Uses either 9V alkaline battery or 120v/220V AC current with optional adapter
- + Hardwire installation option offers additional options

10' microphone cable

- + Facilitates mounting options other than standard in-room wall mounting
- + Adapts to meet different configurations in the testing area, enabling the mic to be properly positioned

Low battery indicator

- + Flashes when battery power is low to help avoid service interruption

Daily functional testing

- + Easily perform audiometer checks without the need for a human test subject
- + Reduces cost and uncertainty to ensure accurate daily results

Conforms to standards

- (Model BA-202-25)
- + BA-202-25 includes octave band filter and set points for testing to OSHA requirement
- + Reduces guesswork on hearing compliance needs



TSI Incorporated - Visit our website www.tsi.com for more information.

USA	Tel: +1 800 874 2811	India	Tel: +91 80 67877200
UK	Tel: +44 149 4 459200	China	Tel: +86 10 8219 7688
France	Tel: +33 1 41 19 21 99	Singapore	Tel: +65 6595 6388
Germany	Tel: +49 241 523030		