

# See Through the



## TSI® Quest™ Edge 7 Personal Noise Dosimeters





# In noisy work environments, protecting your hearing is crucial to staying safe and healthy.

The **TSI® Quest™ Edge 7 Personal Noise Dosimeter** is a powerful and intuitive instrument designed to identify hearing loss threats and inform the design of hearing protection programs and engineering controls.

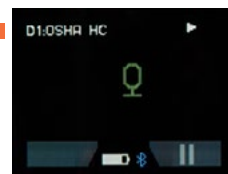
Its countless capabilities provide accurate and comprehensive real-time data on noise exposure levels. While, its durable design ensures reliable performance even in the toughest conditions. Help protect your workers from hazardous noise levels in the workplace with the all-new TSI® Quest™ Edge 7 Personal Noise Dosimeter.



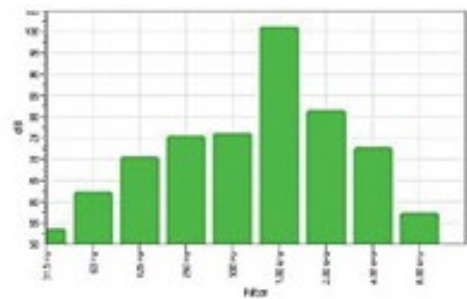
## Powerful In Capabilities

With the Quest™ Edge 7 Personal Noise Dosimeter, its user-configurable settings allow you to control feature set-up and analysis according to your specific needs. It comes standard with the full feature set, so there are no upgrade charges.

- **1/1 Octave Band** data capture and analysis enables understanding of low and high frequency noise levels in order to ensure proper hearing protection and also Engineering Control validation and identification of potential changes needed.
- **Voice Notes** feature allows you to capture a verbal note about location, description, or noise event, which will display in the time-stamped data set for reference in later analysis.
- **Ceiling Threshold Monitoring** counts the number of time that a noise level has exceeded a preset threshold and trigger time, informing your decisions on implementing engineering controls and hearing protection device changes
- **LED Dose Indicator** flashes to easily identify who has reached their daily maximum noise dose exposure.
- **BLE5 Bluetooth®** technology (optional) syncs to the Edge dB mobile app for data viewing and management at a safe distance.
- **Audio Recording** function will automatically record audio of a noise event above a configurable dB level and be reviewable in your time-stamped data set, allowing for improved diagnostics and time savings in analysis.
- **Pause Study** functionality allows for limination of noise data during breaks, location/ shift changes, or off-site travel to give a more accurate representation of working environments.



# DURABLE



Filter Summary - Dose

Filter	Dose
125 Hz	0%
250 Hz	0%
500 Hz	0%
1000 Hz	0%
2000 Hz	10%
4000 Hz	11%
8000 Hz	0%

## Built Durable

Specifically designed for day-after-day use in tough environments.

- Robust Windscreen is designed for daily use and is easy to remove for calibration.
- 1/2" MEMS microphone is designed to hold up to rigorous use.
- Compact Unit mounts easily and securely to the shoulder, so you can move around and work without worrying about the dosimeter getting in the way.
- Shock-resistant rubber overlay provides better protection and durability.

Toggle between 4 different internal dosimeters

Press once to make Voice Note

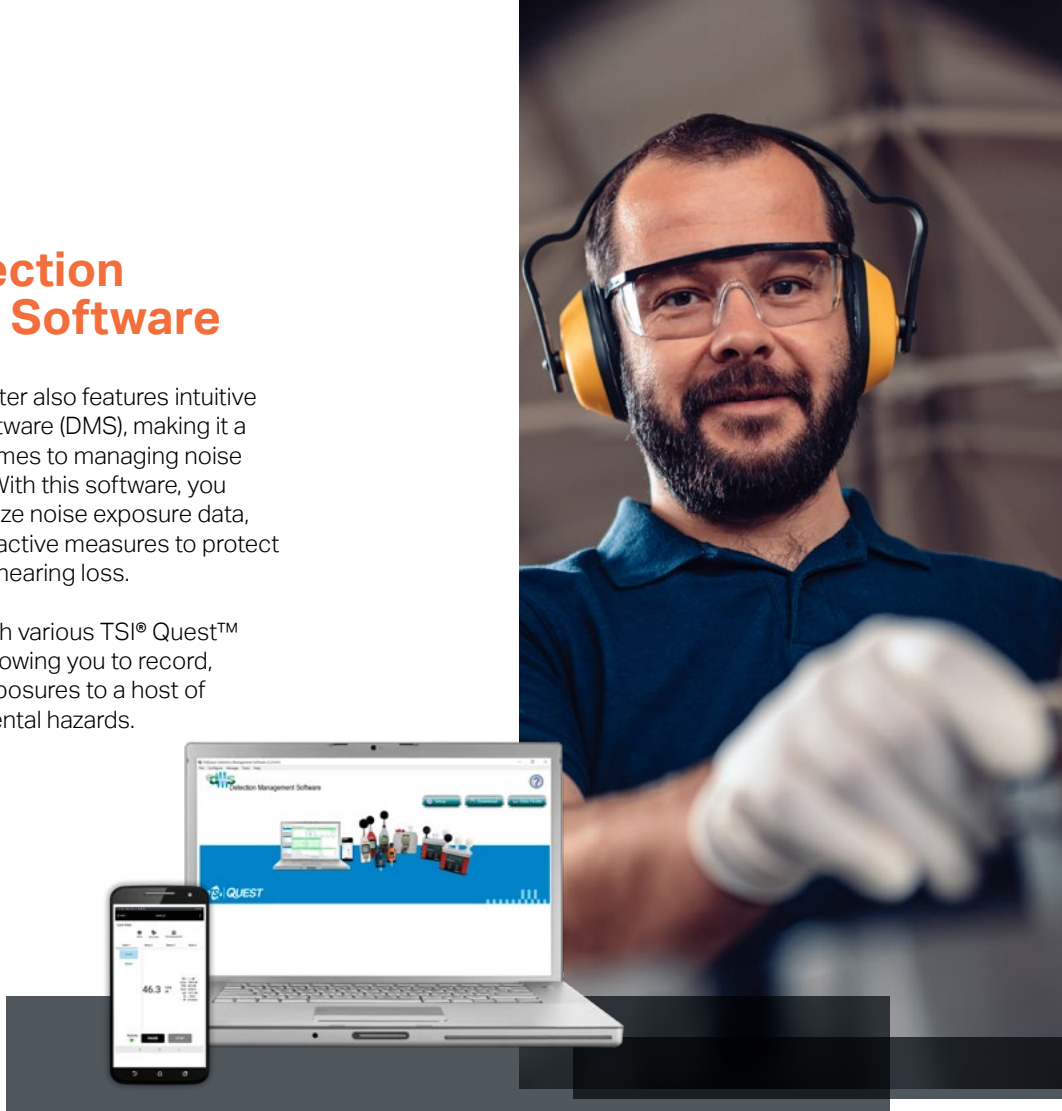


# LISTEN

## Intuitive Detection Management Software

The Quest™ Edge 7 dosimeter also features intuitive Detection Management Software (DMS), making it a true powerhouse when it comes to managing noise exposure in the workplace. With this software, you can easily monitor and analyze noise exposure data, identify trends, and take proactive measures to protect your workers from potential hearing loss.

The DMS program works with various TSI® Quest™ data logging instruments, allowing you to record, report, chart and analyze exposures to a host of occupational and environmental hazards.



Get in touch with us today to learn more about this powerful instrument – Quest™ Edge 7 Personal Noise Dosimeters.

Scan the QR Code to learn more or visit

[tsi.com/edge7](https://tsi.com/edge7)



## Protect Your Instrument

TSI® has new service plans for Quest™ Edge dosimeters with calibration and extended warranty coverage.

Contact us to learn about TSI Service offerings or visit [TSI.com/edge-service-plan](https://tsi.com/edge-service-plan)



Knowledge Beyond Measure.

TSI Incorporated - Visit our website [www.tsi.com](https://www.tsi.com) for more information.

USA	Tel: +1 800 874 2811	India	Tel: +91 80 67877200
UK	Tel: +44 149 4 459200	China	Tel: +86 10 8219 7688
France	Tel: +33 1 41 19 21 99	Singapore	Tel: +65 6595 6388
Germany	Tel: +49 241 523030		

TSI and the TSI logo are registered trademarks of TSI Incorporated in the United States and may be protected under other country's trademark registrations.

The Bluetooth® word mark and logos are registered trademarks owned by Bluetooth SIG, Inc. and any use of such marks by TSI Incorporated is under license. Other trademarks and trade names are those of their respective owners.