

# VPG-A3 IN-LINE PROCESS GAS FILTER

HIGH EFFICIENCY FILTRATION DOWN TO 2nm AND UP TO 100 SLPM

The VPG-A3 Vapor Process Gas filter is an ultra-low pressure drop, highly-efficient in-line filter designed for vapor and process gas filtration. This patent-protected 316L SS filter, is chemically- and thermally-resistant and can be used up to 100 SLPM. The extremely low pressure drop of this filter makes it easier to work in ultra-low pressure environments and reduces the risk of gas phase reactions occurring in the filter.



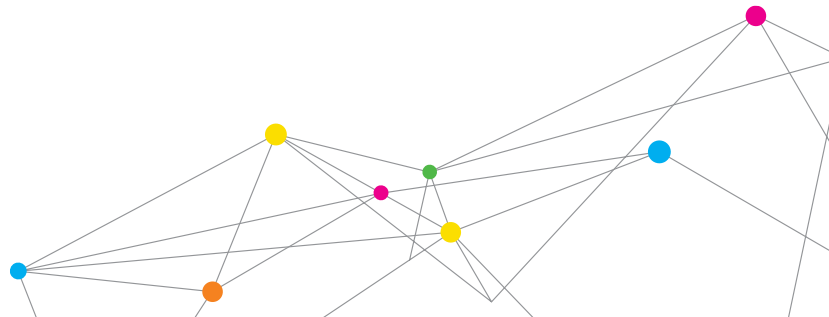
Conventional high-purity, point-of-use gas filters are used in a compressed gas line for particle removal. The VPG-A3 filter is also used downstream of a vaporizer under vacuum flow conditions to prevent particles, which could potentially be in the gas/vapor mixture, from entering the Chemical Vapor Deposition (CVD) or Atomic Layer Deposition (ALD) process chamber. The VPG-A3 filter is made from 316L SS sintered powder media and has a large surface area, giving the filter a long lifetime.

## Applications

- + Vapor process gas
- + Ultra-high purity gas
- + High temperature
- + Inert or reactive gases
- + High and ultra-high vacuum
- + Semiconductor manufacturing

## Features and Benefits

- + 316 Stainless Steel
- + Large surface area - long life
- + Use up to 100 SLPM
- + High particle removal efficiency
- + Ultra-low pressure drop
- + ½" VCR fittings



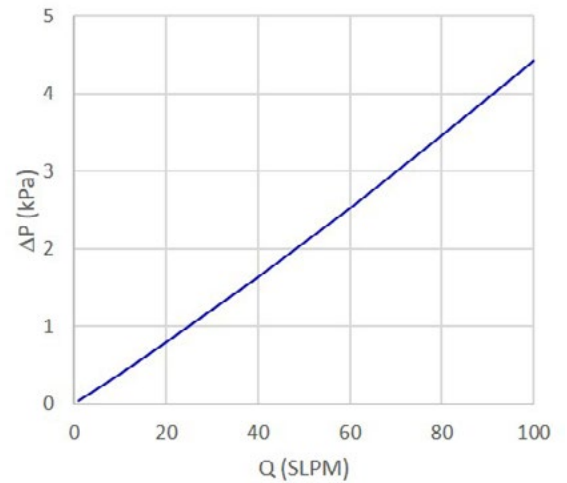
# SPECIFICATIONS

## VPG-A3 IN-LINE PROCESS GAS FILTER

Specifications		
Efficiency* @ 1 SLPM	2.5nm 10 nm 50 nm	99.9999999% (nine 9s) 99.9999% (six 9s) 99.99% (four 9s)
Filter Media	Sintered 316L SS Powder	
Wetted Materials	Stainless Steel 316L	
Temperature Range (°C)	< 400 (inert gases)	
Max. Operating Pressure (psig)	2500	
Max. Differential Pressure (psid)	500	
Flow Rate Range (SLPM)	0-100	
Weight (kg/lb)	0.45/1	
Fittings**	½" male VCR with 7/8-14 thread	

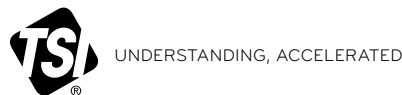
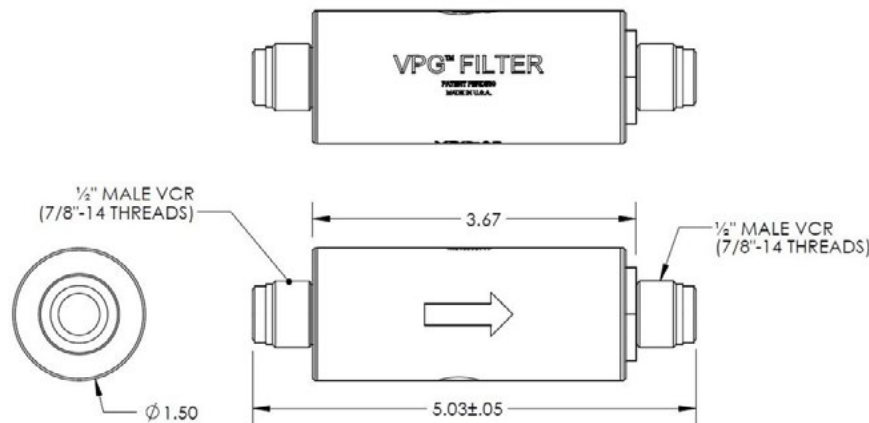
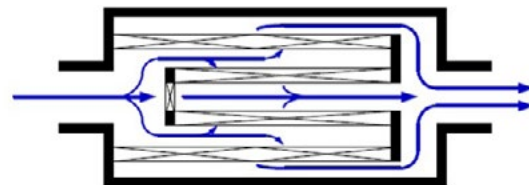
\*Filtration efficiency at atmospheric pressure  
 \*\*Alternative fitting options available by request

VPG-A3 Pressure Drop vs Flow Rate



### Patent-protected Design

Cross-flow construction provides highly efficient filtration with ultra-low pressure drop. 316L SS sintered powder media provides large surface area for long filter lifetimes.



TSI Incorporated - Visit our website [www.tsi.com](http://www.tsi.com) for more information.

**USA** Tel: +1 800 874 2811  
**UK** Tel: +44 149 4 459200  
**France** Tel: +33 1 41 19 21 99  
**Germany** Tel: +49 241 523030  
**India** Tel: +91 80 67877200  
**China** Tel: +86 10 8219 7688  
**Singapore** Tel: +65 6595 6388

Specifications are subject to change without notice.

The MSP logo is a registered trademark of MSP Corporation.  
 TSI and the TSI logo are registered trademarks of TSI Incorporated.