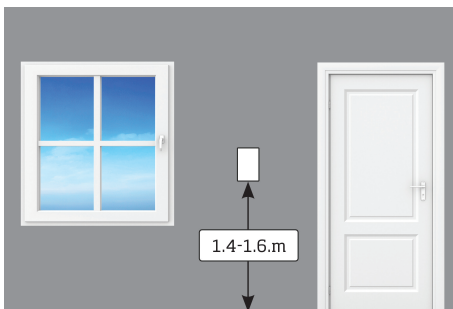


# QUICK START GUIDE

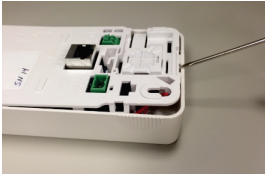
## AIRASSURE™ INDOOR PM2.5 MASS CONCENTRATION MONITOR

### MODEL IPM2.5

### 1. Prepare Wall

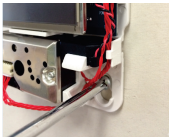
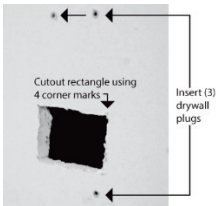


## 2. Mount Monitor

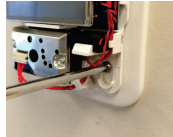


24 VAC/VDC only

### Without Wall Plate



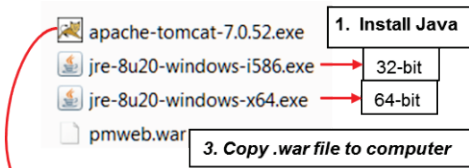
### With Wall Plate



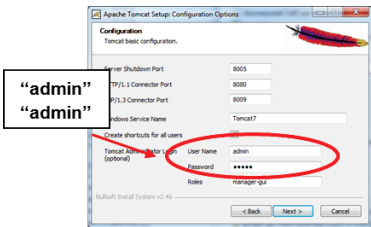
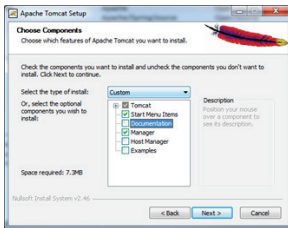
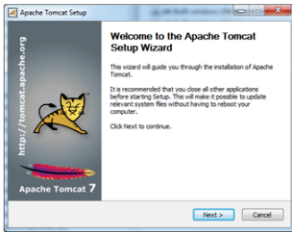
### 3. Install Web Application Java<sup>®</sup>, Tomcat<sup>™</sup> and AirAssure Web

Download and open installation  
package.

<http://www.tsi.com/airassure-get-started-en>



2. Install Tomcat



“admin”  
“admin”

## 4. Open Tomcat™ Application Manager Interface

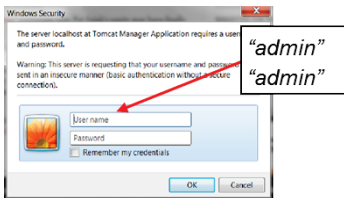
- a. Open web browser

<http://localhost:8080/manager>

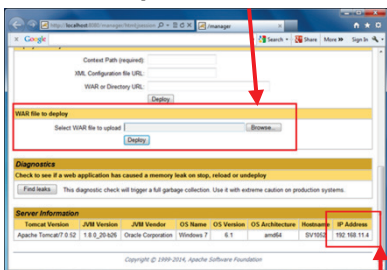
or

<http://IPADDRESS:8080/manager>

“IPADDRESS” = address of server.

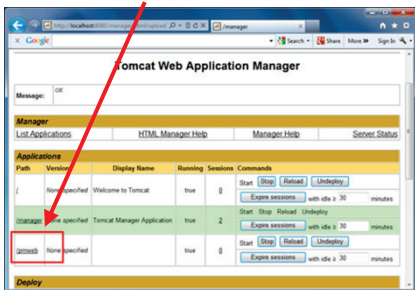


- b. Browse for **pmweb.war**



- c. Record Tomcat **IP Server Address**

- d. Click on **/pmweb** to open application

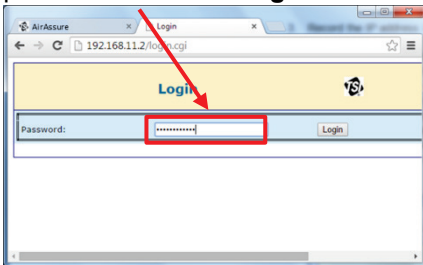


## 5. AirAssure Monitor IP Configuration

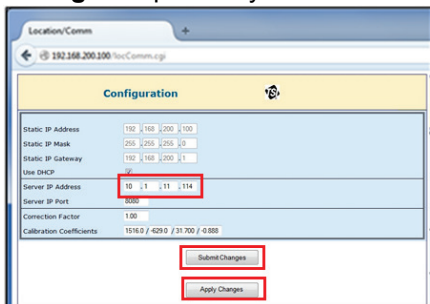
- Connect instrument to 24V power and Ethernet connection.
- Record **IP Address**



- Open web browser by entering AirAssure IP Address on computer connected to same network.
- Enter **serial number** of monitor as password and click **Login**.

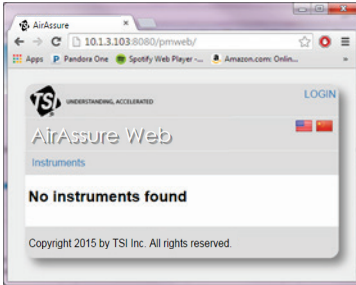


- Enter **Tomcat Server IP address**.
- Click **Submit Changes** and **Apply Changes** to power-cycle the monitor.

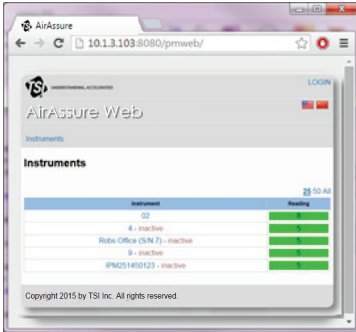


- Repeat for all monitors to be configured.

- h. Refresh or re-open AirAssure Web with the Application to view each monitor.



- i. Wait up to 5 minutes for each configured monitor to appear on AirAssure Web Application and refresh the web page.



UNDERSTANDING, ACCELERATED

TSI Incorporated – Visit our website [www.tsi.com](http://www.tsi.com) for more information.

USA           Tel: +1 800 874 2811  
UK            Tel: +44 149 4 459200  
France       Tel: +33 1 41 19 21 99  
Germany     Tel: +49 241 523030  
India         Tel: +91 80 67877200  
China        Tel: +86 10 8219 7688  
Singapore   Tel: +65 6595 6388

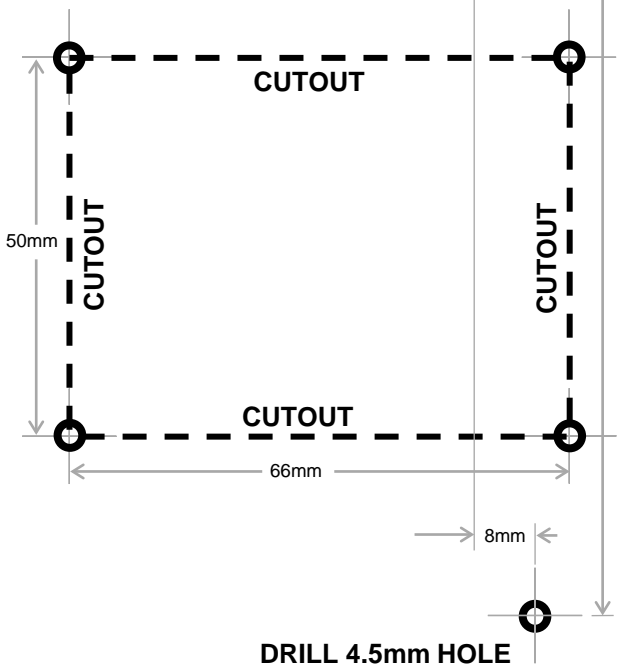


# MODEL IPM2.5 WALL MOUNT TEMPLATE



## INSTRUCTIONS

1. Tape to wall, use level to straighten
2. Use center punch or sharp tool to mark hole locations and cutout corners
3. Remove template
4. Drill holes though drywall and cut rectangular hole
5. Refer to manual for install instructions



Outline of Device – Do Not Cut