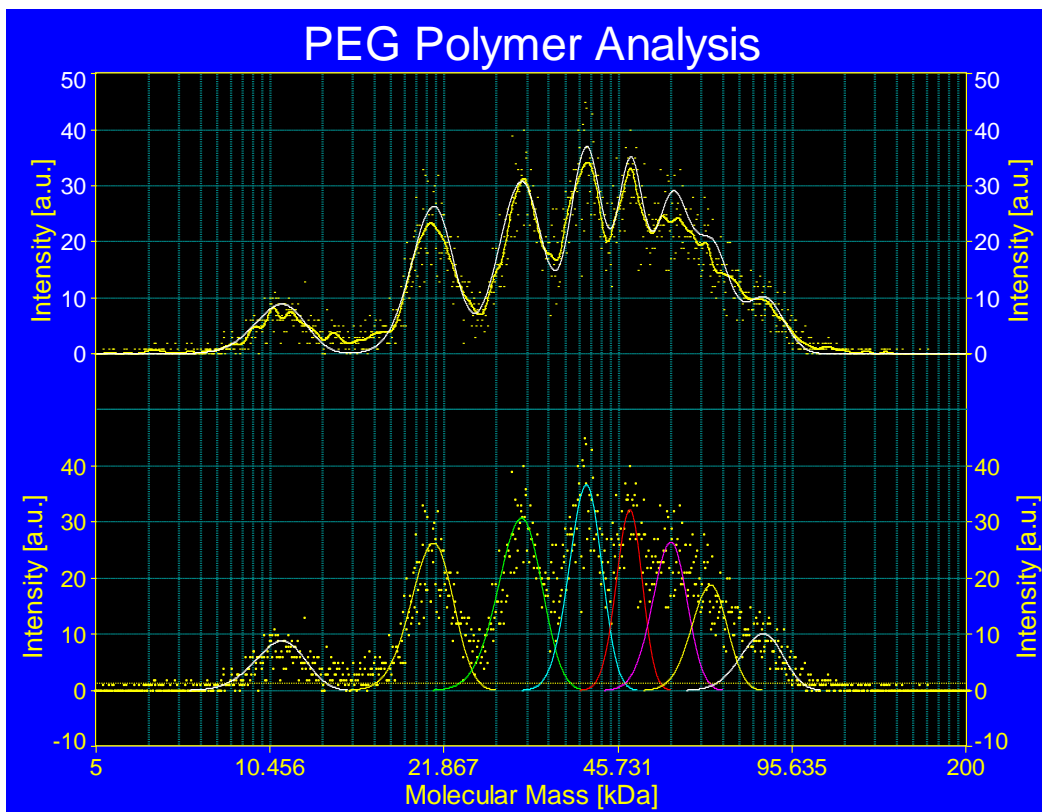


# WATER-SOLUBLE PEG POLYMER— *macroIMS*<sup>™</sup> MASS SPECTRUM WITH PEAK FITTING

APPLICATION NOTE CHEMC-006

A *macroIMS* mass spectrum of a polyethylene glycol (PEG) mixture exported from *macroIMS* Manager Software into PeakFit v.4.12 (SeaSolve Software Inc., not included or sold by TSI). The PeakFit software deconvolutes the overlapping data into 8 peaks (lower trace) which explain the signal observed by the *macroIMS* system. In the upper trace, the yellow line and yellow dots represent the raw data, and the white line represents the sum of the colored Gaussian peaks in the lower trace.





UNDERSTANDING, ACCELERATED

**TSI Incorporated** – Visit our website [www.tsi.com](http://www.tsi.com) for more information.

<b>USA</b>	<b>Tel:</b> +1 800 874 2811	<b>India</b>	<b>Tel:</b> +91 80 67877200
<b>UK</b>	<b>Tel:</b> +44 149 4 459200	<b>China</b>	<b>Tel:</b> +86 10 8251 6588
<b>France</b>	<b>Tel:</b> +33 4 91 11 87 64	<b>Singapore</b>	<b>Tel:</b> +65 6595 6388
<b>Germany</b>	<b>Tel:</b> +49 241 523030		