



® Knowledge Beyond Measure.

Fit Test Probe Kit

Model 8025-N95



Use the TSI® Model 8025-N95 Fit Test Probe Kit along with your PortaCount® Pro and Pro+ Respirator Fit Testers to quantitatively fit test filtering-facepiece (disposable) respirators¹.

The sampling probes work on all filtering-facepiece type respirators. In addition to determining if the mask is the right size, a successful quantitative fit test verifies that the employee has learned to properly bend the noseband and don the respirator. The PortaCount Pro+ Fit Tester sample hose fits directly onto the exposed end of the sampling probe.

The kit include:

- PortaPunch™ Probe Insertion Tool
- 500 probes
- 500 push nuts

Features and Benefits

- Allows quantitative fit testing of any class, brand or size filtering-facepiece respirator
- Eliminates need to order or stock pre-probed masks from the respirator manufacturer
- Probe installation is fast and easy
- Inexpensive sampling probes are disposable



Specifications

Fit Test Probe Kit

Model 8025-N95

In order to perform a quantitative fit test the PortaCount® Pro or Pro+ Respirator Fit Tester must draw an air sample from inside the respirator while it is being worn by the person being fit tested. Use the PortaPunch™ Probe Insertion Tool, sampling probes, and push nuts contained in this kit to install a sampling port onto any disposable filtering-facepiece respirator.

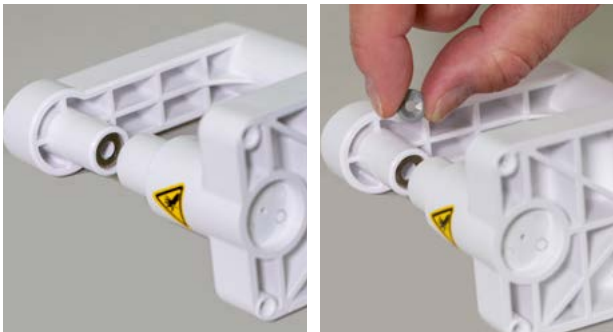
Step 1: Choose a location to install the sample probe. For proper fit testing, the sampling point must be in the "breathing zone" of the respirator user. For most respirators, this is in the center of the respirator between the person's nose and mouth.



Step 2: Load a sample probe onto the PortaPunch™ piercing tool.



Step 3: Load a push nut onto the magnetic push nut tool on the PortaPunch™ tool.



Step 4: Use the PortaPunch™ Probe Insertion Tool (with probe loaded) to puncture the respirator **from the inside**. It is not necessary to push the probe all the way through. All you need to do is get the point through far enough to be seen from the other side.



Step 5: Next, press down on the PortaPunch™ lever arm to engage the push nut onto the exposed point poking through the respirator and firmly push them together as far as possible.



Step 6: Release the PortaPunch™ lever arm and remove the respirator and inspect the sample port to make sure it is tightly secured and will not leak. You should not be able to rotate the probe with your fingers. If necessary, use the PortaPunch™ Probe Insertion Tool again to tighten the port.



The respirator is now ready for fit testing.



Knowledge Beyond Measure.

TSI Incorporated - Visit our website www.tsi.com for more information.

USA Tel: +1 800 874 2811
UK Tel: +44 149 4 459200
France Tel: +33 1 41 19 21 99
Germany Tel: +49 241 523030

India Tel: +91 80 67877200
China Tel: +86 10 8219 7688
Singapore Tel: +65 6595 6388

¹Use the PortaCount Pro or Pro+ Fit Tester to fit test NIOSH Series 100 and Series-99 disposable respirators. Use the PortaCount Pro+ Fit Tester for fit testing Series-95 respirators.

For additional probes, please order Model 8025-N95R Refill Kit (contains 500 sampling probes and 500 push nuts).

PortaCount Pro+ Fit Tester supplied with the same tool set that comes with the 8025-N95 Probe Kit and 100 probes.

Specifications are subject to change without notice.

PortaCount, TSI and the TSI logo are registered trademarks in the United States and may be protected under other country's trademark registrations.