

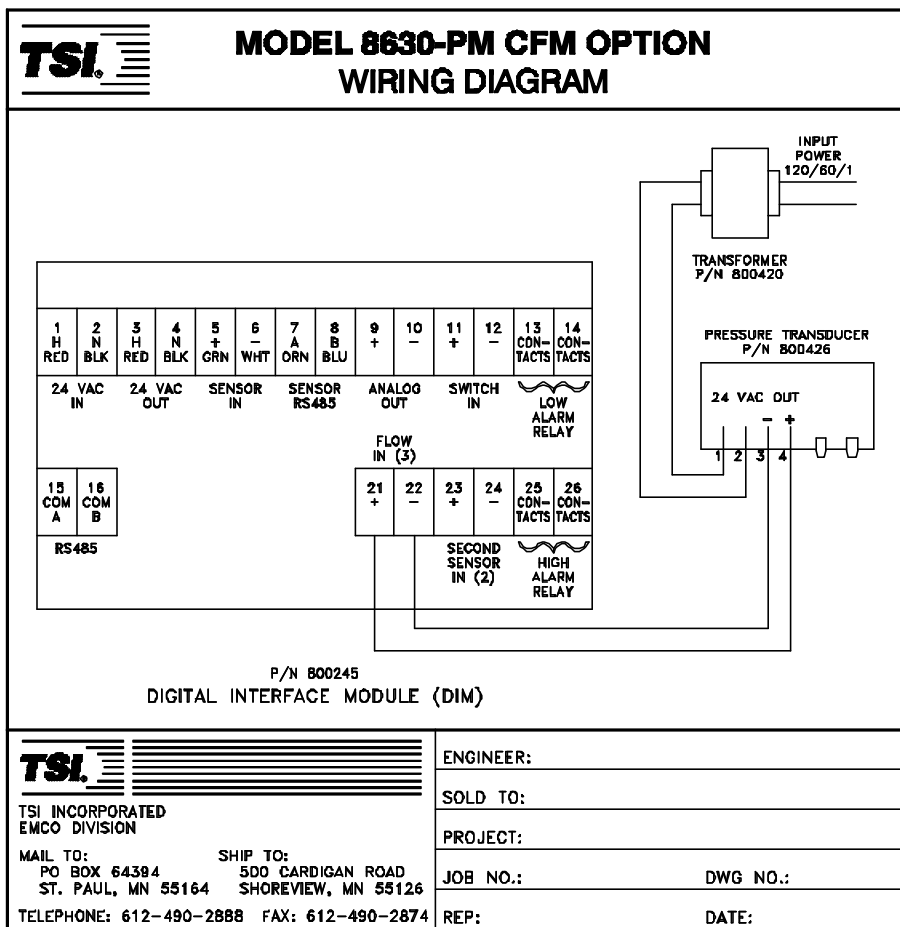
# MODEL 8630 CFM OPTION INSTALLATION INSTRUCTIONS

INSTALLING WITH THE MODEL 8630 PRESSURA

The purpose of these instructions is to guide the installer through the installation of the optional TSI flow station and pressure transducer. The complete Model 8630 PRESSURA installation is covered in the *Model 8630 Room Pressure Installation Instructions*. Make sure drawing used for wiring matches Digital Interface Module (DIM) part number being installed.

The CFM option must be wired per the figure below. Wire should be 22 AWG or larger (supplied). Any modification to the wiring may damage the transducer and Digital Interface Module.

**WARNING** The transformer provided must be used to power pressure transducer. Do not power any other devices with transformer.



7/15/95

COPYRIGHT ©, 1995 BY TSI INCORPORATED

**Figure 1: P/N 800245 Flow Wiring**

Figure 2: P/N 800246, 800247 Exhaust Flow Wiring

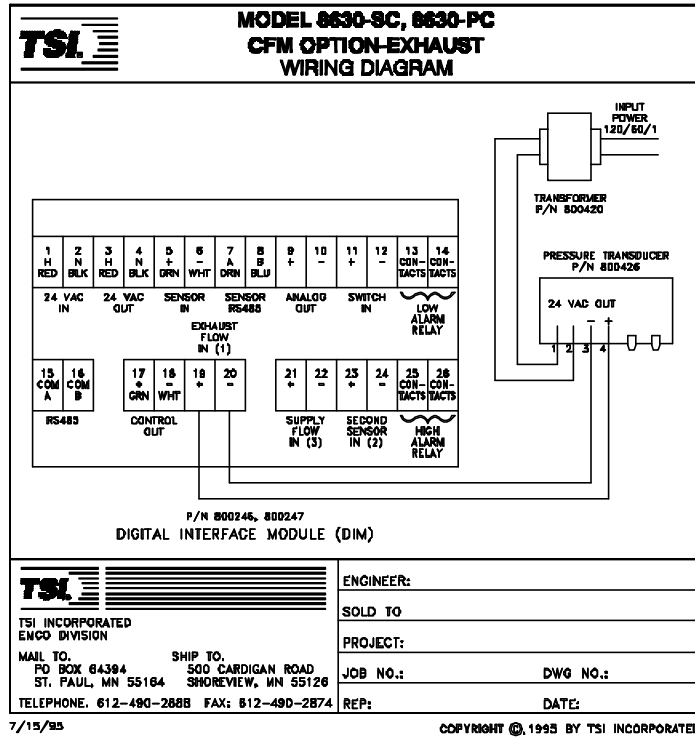
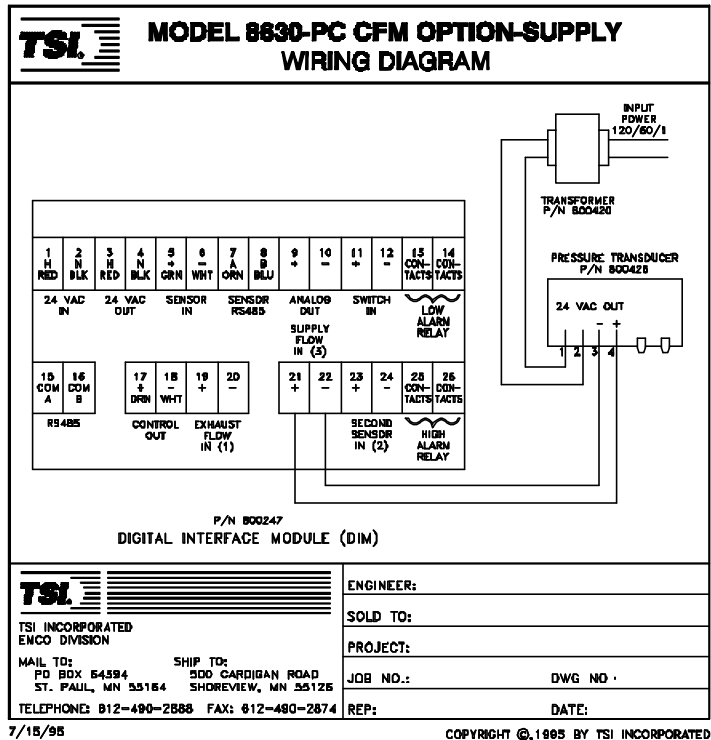


Figure 3: P/N 800247 Supply Flow Wiring



This concludes installation of the CFM option. If you need assistance installing the Digital Interface Module, see the *Model 8630 PRESSURA Installation Instructions*. If you need further assistance, contact your local representative or TSI at 1-800-876-2685.

Part Number 1980248  
August 1995