

SUREFLOW™ Model 8650 Face Velocity Controller

Description

The Model 8650 SUREFLOW Face Velocity Controller is designed to control your fume hoods to a constant face velocity.

By providing a constant face velocity, the SUREFLOW will enhance the safety and reduce the energy costs of a fume hood. Designing around these reduced flows allows HVAC equipment such as fans and chillers to be downsized.

The Model 8650 easily integrates to the building management system using either alarm relays or digital communications. The open Modbus® protocol is supported by the Model 8650, with options for LONWORKS and BACnet.



Features

- Stand-alone face velocity control provides system reliability
- Direct face velocity measurement provides continuous, closed-loop control
- Audible and visual alarms warn staff of unsafe conditions
- Network communications allow for building-wide control efficiencies
- Convenient keypad and display support local programming
- Passwords prevent unauthorized access to controller functions

Selection Chart

	8650	8650-ND	8650-PF1	8650-LN	8650-BAC
Low Alarm Contact	•	•	•	•	•
High Alarm Contact	•	•	•	•	•
No-Flow Alarm Contact	•	•	•		
Setback Input	•	•		•	•
Emergency Input	•	•	•	•	•
Analog Output	•	•	•	•	•
Modbus Communications	•	•	•		
N2 Communications	•				
BACnet™ MSTP Communications					•
LonWorks® Communications				•	
Shutdown Mode		•			
Damper Min & Max	•		•	•	•
High Sash Alarm			•		
Alarm Ringback			•		

Items Included

Controller
 Side wall pressure sensor
 Sensor cable, 6 ft
 Controller output cable, 25 ft
 Transformer, 120:24 VAC, 25 VA
 Transformer cable, 25 ft
 Electric or pneumatic damper/actuator assembly

Hardware Options

Vent kit
 Dual vent kit for 8 ft and larger hoods
 Remote audible alarm

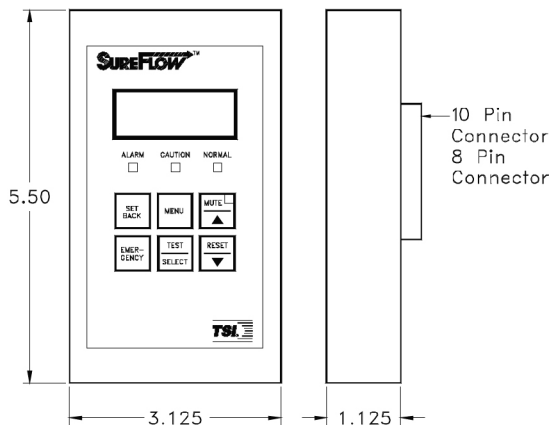
BACnet is a trademark of ASHRAE.

LonWorks® is a registered trademark of Echelon® Corporation.

Modbus® is a registered trademark of Modicon, Inc.

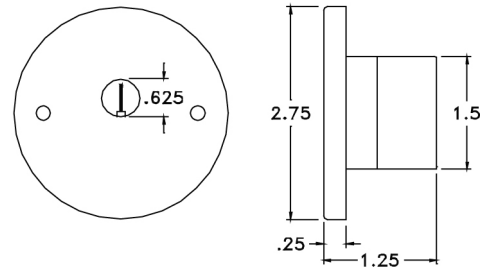
Controller Specifications

Display Range	0 to 1000 fpm
Low Alarm Range	5 to 980 fpm
High Alarm Range	80 to 1000 fpm
No Flow Alarm Range	5 to 1000 fpm
Alarm Contacts	SPST (NO) Max Current 5A Max voltage 150 VDC, 250 VAC
Min. Switch Load	10 mA, 5 VDC
Operating Temperature	32 to 120°F
Input Power	24 VAC, 6 W max
Size (HxWxD)	5.50 in. x 3.125 in. x 1.125 in.
Weight	0.75 lb



Sensor Specifications

Range	0 to 1000 fpm
Resolution	1 ft/min
Temp. Comp. Range	55 to 95°F
Power Dissipation	0.09 W at 0 fpm 0.14 W at 100 fpm
Size (HxWxD)	3.75 in. x 1.25 in.
Weight	0.2 lb



Specifications subject to change without notice.



TSI Incorporated
500 Cardigan Road
Shoreview, MN 55126 U.S.A.
Tel: 651 490 2811
800 874 2811
Fax: 651 490 3824
E-mail: answers@tsi.com