

# TSI POWERVIEW™ 630136 9MP CAMERA

TSI PowerView™ 9MP Camera is a multi-bit, 9-megapixel, digital CCD camera designed exclusively for global flow measurements - Planar, PIV, volumetric PIV, and PLIF. It offers 3388 x 2712 pixel resolution and operates at 14 frames per second at full resolution with a 12-bit dynamic range. With the extremely low noise level and high signal quality, it can image large flow fields with very high resolution.



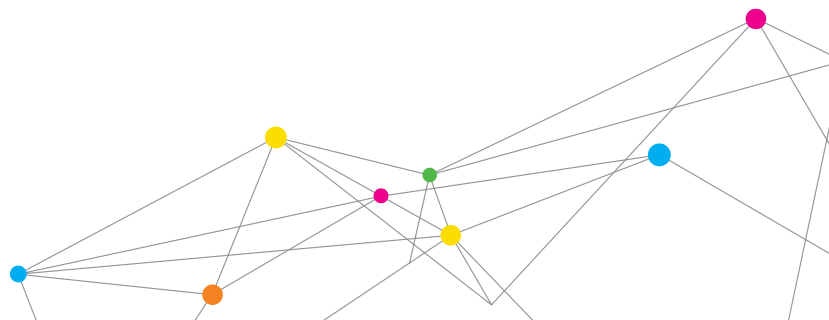
The PowerView camera is designed with a defective/hot pixel correction dynamically to ensure all the pixels are used for your imaging requirement to get the accurate flow measurements. Other features, such as short frame straddling times and high quantum efficiency, make it appropriate for a wide variety of applications ranging from hypersonic to creeping flows.

The camera is supported by the industrial standard Cameralink frame grabber which offers high data throughput to ensure all images can be transferred. The camera is fitted with an F-mount lens mount, to allow large aperture camera lenses to be used. Multiple camera arrangement can be configured for stereoPIV or volumetric PIV for 2D3C or 3D3C flow measurement.

Model 630136 camera is a complete system including the camera, frame grabber interface, power supply, frame grabber cables, trigger cables, 50 mm camera lens and instruction manual.



UNDERSTANDING, ACCELERATED



# SPECIFICATIONS

## TSI POWERVIEW™ 9MP CAMERA

Description	Specifications
Image Device	CCD sensor with Microlens
Pixel Resolution	3388 x 2712 pixels
Pixel Size	3.7 $\mu\text{m}$ x 3.7 $\mu\text{m}$
Image Size	12.50 mm x 10.00 mm
Intensity Dynamics Range	12 -bit
Frame Rate	14 fps (up to 17 fps at overclock)
Gain Control	Analog gain and digital gain
Quantum Efficiency	55% (550 nm)
Pixel Clock Rate	40 MHz
Frame Straddle Time	< 200 ns
Lens Mount	Nikon® F-Mount
Camera Interface	Dual cameraink frame grabber
Standard Camera Lens	Nikon® 50 mm F1.8 lens

Nikon® is a registered trademark of Nikon Company.

Specifications are subject to change without notice.  
TSI and TSI logo are trademarks of TSI Incorporated.



UNDERSTANDING, ACCELERATED

**TSI Incorporated** - Visit our website [www.tsi.com](http://www.tsi.com) for more information.

**USA** Tel: +1 800 874 2811      **India** Tel: +91 80 67877200  
**UK** Tel: +44 149 4 459200      **China** Tel: +86 10 8219 7688  
**France** Tel: +33 1 41 19 21 99      **Singapore** Tel: +65 6595 6388  
**Germany** Tel: +49 241 523030