

Your Flow Meter Redefined

Introducing our all-in-one gas mass flow meter



4



1



3



2



1

Multiple Integrated Measurements

Flow | Temperature | Absolute Pressure | Volume | Low Differential Pressure | Humidity

The measurements you need, in one device.

Our all-in-one Flow Meter offers the option to combine flow, temperature, absolute pressure, volume, low differential pressure, and humidity measurements in a single device. In addition to simplifying your test setup, you are also saving time and money by not purchasing and maintaining multiple instruments.



2

Fits Your Application

Let our new flow meter fit your unique application.

Our new all-in-one Flow Meter fits into your test setup, with its user-configurable tube ends, wide operating range, and lightweight, compact design.



3

Easy to Use Touchscreen Display

Quickly and easily configure measurements and device settings directly from the flow meter's large, color touchscreen display.

You can also view up to four readings simultaneously, as well as pause the display to record readings or log the data directly to the instrument.



4

Built-In Data Logger

Save your data to the meter and easily export it using the USB port.

With the 5000 Series, datalogs are saved as CSV files with all measurement data automatically synchronized, which can be exported using a USB flash drive or connected directly to the FLO-Sight™ software.



Operate with FLO-Sight™ PC Software

Use our FLO-Sight Companion Software to do even more with your Meter.

Unlock additional functionality such as viewing real-time graphs, displaying min/max/average data, naming and organizing your flow meters for easier recognition, logging data directly to the computer, setting alarms, and more.



Make the Measurements You Need

Our new flow meter provides bi-directional flow sensing with a best-in-class turndown ratio.

This means you can measure a wide range of flow rates in both directions with a single meter, and is especially useful if your full flow range is unknown or fluctuates widely.



Calibrated and Compensated

For each meter, TSI performs a 10 point NIST-traceable calibration across its entire flow range.

All Meters are compensated to provide a mass flow output independent of temperature and pressure. Some models of the 5000 Series can also compensate for humidity to provide the equivalent dry gas flow.

Features

- + 4 millisecond bi-directional flow response
- + High accuracy ($\pm 2\%$ of reading, $\pm 1.7\%$ of reading optional)
- + Low pressure drop minimizes flow back pressure
- + Wide dynamic operating range (1000:1 turndown ratio)
- + Multiple gas calibrations available, user-selectable
- + Measure up to 6 parameters with a single instrument
- + Display four measurement parameters simultaneously
- + 2.8 inch color touchscreen operation
- + Configurable tube end connectors
- + Data logging options
- + USB power and data communications
- + Temperature and pressure compensated, optional humidity compensation
- + 10 Point NIST-traceable Calibration Certificate included
- + Comes with FLO-Sight PC software (basic version)

Industries

- + Medical Device Manufacturing and Service
 - Ventilators, CPAPs, Anesthesia workstations, Oxygen concentrators, Nebulizers, Inhalers
- + Light Industrial
 - Valves, pumps, fittings, tubings, regulators, etc.
- + Environmental
 - Sampling pumps
 - Air sampling instrumentation
- + Research & Analytical
- + Aerosol Science



Proven Performance

Our new all-in-one flow meter is built with the same proven technology that's been relied upon for 35+ years.

The 5000 Series utilizes our proprietary platinum film sensor design for measuring gas flows where high accuracy, fast response, and low pressure drop are performance must-haves.



Applications

Researchers, engineers, designers, and scientists use TSI Gas Flow Meters in a variety of applications such as:

- + Product Development
- + Manufacturing
- + Quality Assurance
- + Research
- + Metrology
- + Field Service



FLO-Sight PC Software

Get the most out of your new all-in-one TSI Flow Meter with FLO-Sight PC Software, our 5000 Series companion software.

You can now couple the real time analytics and data visualization of FLO-Sight software with the industry-leading response rate and ultra-low pressure drop of our 5000 Series Flow Meters to gain valuable insights and truly understand your flows.

Optional FLO-Sight basic software is included with the purchase of a 5000 Series Multi-Meter and provides these features:

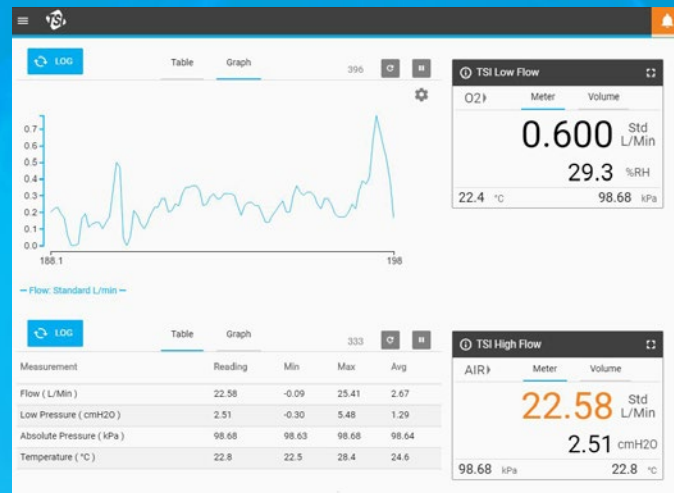
- + Real-time display of all measurement parameters including totalizer
- + Min, max, and average readings
- + Advanced meter configuration

Optional FLO-Sight advanced software features include:

- + Real-time graphing
- + Data logging, download, and file management
- + Alerts set for any parameter
- + Multiple meter operation

A free trial of FLO-Sight software's advanced features is included with the Series 5000 Flow Meter. The advanced version can be purchased through the software itself or at www.tsi.com.

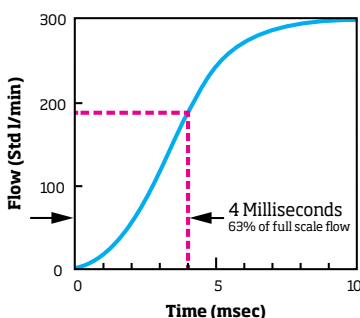
See your flows as you've never seen them before with FLO-Sight software.



Proven Performance

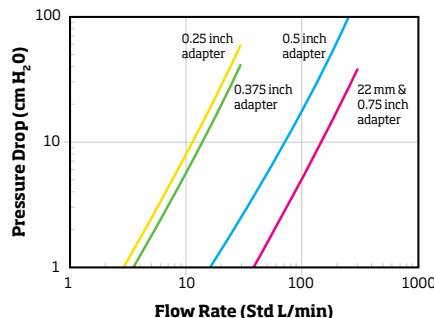
All TSI meters come with our unique platinum film sensor, providing highly accurate readings, fast response time, and low pressure drop.

Response to a Step Change in Flowrate



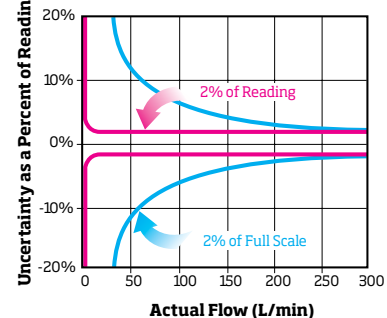
Fast
Fast 4 millisecond response ensures accuracy in fluctuating flows. This fast response is ideal for closed-loop control systems and integrated volume measurements. Pressure and temperature measurements are also extremely fast.

5000 Series Pressure Drop



Low Pressure Drop
Low pressure drop minimizes flow circuit back pressure and its impact on the system under test.

% of Reading vs. % of F.S.



Accurate
A flowmeter specified as $\pm 2\%$ of full scale is most accurate at full scale. If full scale is 300 L/min, then the uncertainty for all readings is ± 6 L/min. TSI flow meters are specified as $\pm 2\%$ of reading and have an uncertainty of $\pm 2\%$ of the actual reading from full scale all the way down to a specified lower limit. TSI flow meters, therefore, provide dependable accuracy over a wide range of flow rates. One TSI flowmeter covers the same range as three or more "percent of full scale" devices... with better accuracy at all points!

Model Selection Guide

Step 1

What is the range of your flows?

5200 Series

5300 Series

Flow Range

0-30 Std L/min

0-300 Std L/min

Step 2

What features do you want?

Base Models
(5200, 5300)

Advanced Models
(5210, 5310)

Humidity Models
(5220, 5320)

High Accuracy Models
(5230, 5330)

Wide Accuracy Models
(5203, 5303)

Flow, Totalizer Measurements

+

+

+

+

+

Temperature, Absolute Pressure Measurements

+

+

+

+

+

Volume Measurement (Displayed on screen)

+

+

+

Differential Pressure Measurement

+

+

+

Data Logging

+

+

+

Relative Humidity Measurement

+

+

Humidity Compensation

+

+

Higher Accuracy (1.7% of reading)

+

Wide Accuracy Spec (3% of reading)

+

Step 3

What gases need to be measured?

Air, N₂

Air, O₂,
Air/O₂ mix, N₂

Air, CO₂, N₂

O₂ Only

CO₂ Only

5200 Series Low Flow

Base Models

5200-1

5200-2

5200-3

5200-6

5200-7

Advanced Models

5210-1

5210-2

5210-3

5210-6

5210-7

Humidity Model

5220-2

High Accuracy Model

5230-2

Wide Accuracy Spec Model

5203-2

5300 Series High Flow

Base Models

5300-1

5300-2

5300-3

5300-4

5300-5

Advanced Models

5310-1

5310-2

5310-3

5310-4

5310-5

Humidity Model

5320-2

High Accuracy Model

5330-2

Wide Accuracy Spec Model

5303-2

To see an interactive model selection guide,

Please visit our online tool at [tsi.com/5000-Series-Flow-Meters/Selection-Guide](https://www.tsi.com/5000-Series-Flow-Meters/Selection-Guide)

Accessories



Description	Part Number
Inlet Filter - Low Pressure	5300-IF-LP
Inlet Filter - High Pressure	5300-IF-HP
22mm M to 15mm F ISO Tube Ends (2)	5300-22MM
1/2 Inch Tube Ends (2)	5300-05IN
15mm ISO Tube Ends (2)	5300-15MM
3/4 Inch Tube Ends (2)	5300-075IN
High Pressure 3/8 Inch NPT Tube Ends (2)	5300-375NPT
High Pressure Kit	5300-HPK



Description	Part Number
Inlet Filter 3/8 Inch - Low Pressure	5200-IF-0375IN
Inlet Filter 1/4 Inch - Low Pressure	5200-IF-025IN
3/8 Inch Tube Ends (2)	5200-0375IN
1/4 Inch Tube Ends (2)	5200-025IN
10mm Tube Ends (2)	5200-10MM



Description	Part Number
Tabletop Stand	5000-TTS
USBC to USB-A Cable with Screw Lock	5000-USB-LOCK
USB-RS232 Communications Cable	5000-RS232
USB Hub Cable	5000-HUB
Wall Mounting Kit	5000-WMK
Wall Mounting Din Rail Kit	5000-WMDRK
Deluxe Carrying Case	5000-DCC
FLO-Sight PC Software (Advanced Version)	5000-PC-ADV

To Order a Flow Meter or Any of Our Accessories

Please visit our website at tsi.com/5000-Series-Flow-Meters and place an order through our e-commerce site, or call TSI at one of the numbers listed below.



UNDERSTANDING, ACCELERATED

TSI Incorporated - Visit our website www.tsi.com for more information.

USA	Tel: +1 800 874 2811	India	Tel: +91 80 67877200
UK	Tel: +44 149 4 459200	China	Tel: +86 10 8219 7688
France	Tel: +33 1 41 19 21 99	Singapore	Tel: +65 6595 6388
Germany	Tel: +49 241 523030		

Specifications subject to change without notice.

FLO-Sight is a trademark, and TSI and the TSI logo are registered trademarks of TSI Incorporated.