

# QUICK START GUIDE

## STANDARD ACCESSORY KIT

### 5300 SERIES

---



P/N 6011691, REVISION B  
APRIL 2019

---

TSI and TSI logo are registered trademarks of TSI Incorporated.  
FLO-Sight is a trademark of TSI Incorporated.



For further information/customer support, please contact:

**U.S. & INTERNATIONAL**

**Sales and Customer Service:**

(800) 680-1220 / +1(651) 490-2860

**Fax:**

+1(651) 490-3824

**Email:**

[answers@tsi.com](mailto:answers@tsi.com)

**TSI Instruments Ltd. (UK)**

**Sales and Customer Service:**

+44 (0) 1494 459200

**Fax:**

+44 (0) 1494 459700

# 5300 Series Standard Accessory Kit (53000)







## Kit Components

TSI Part Number	Description	Picture
5300-05IN	5300 Series 1/2-inch Tube Ends (2)	
5300-IF-LP	5300 Series Inlet Filter Low Pressure	
5000-USBC-A	5000 Series USB-C to USB-A Power and Communications Cable (6 ft.)	
5000-UPS	5000 Series Universal Power Supply	
5000-HUB	5000 Series USB Hub Cable	

## 5300 Series Optional Accessories

TSI Part Number	Description	Picture
5300-15MM	15-mm ISO Tube Ends (2)	
5300-075IN	3/4-inch Tube Ends (2)	
5300-375NPT	3/8-inch NPT Tube Ends (2) for High Pressure Applications	
5300-EC	5300 Series End Caps (2)	
5300-C	5300 Series Collars (2)	
5300-HPK	5300 Series High Pressure Kit	

## 5000 Series Optional Accessories

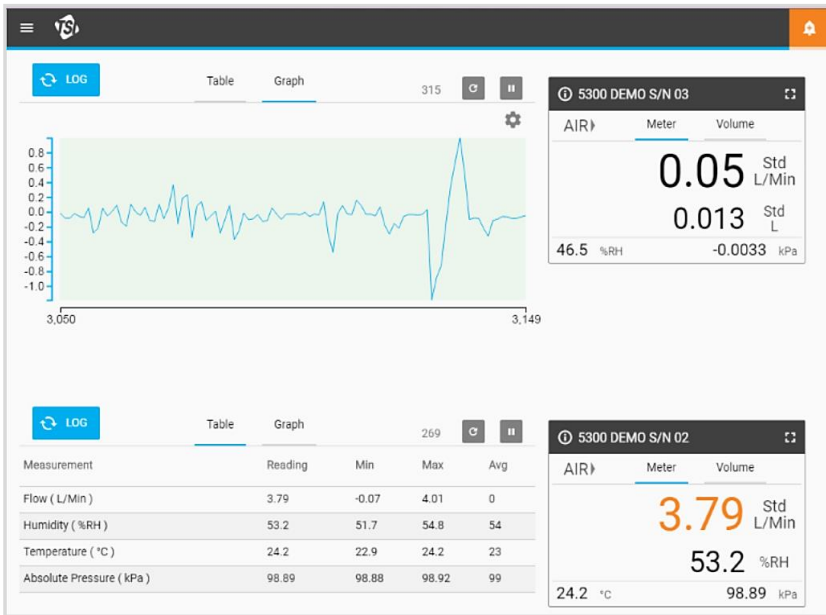
TSI Part Number	Description	Picture
5000-TTS	5000 Series Tabletop Stand	 <p>A tan-colored metal tabletop stand with a flat base and a vertical support. It includes four screws for assembly.</p>
5000-RS232	5000 Series USB-RS232 Cable with Null Modem Converter	 <p>A white cable with a blue USB-A connector on one end and a white RS-232 connector on the other. A separate white null modem converter module is also shown.</p>
5000-USB-LOCK	5000 Series USB-C to USB-A Cable with Screw Lock (Includes reversible head screwdriver)	 <p>A black cable with a USB-C connector on one end and a USB-A connector on the other. A small, reversible head screwdriver is included.</p>
5000-WMK	5000 Series Wall Mounting Kit	 <p>A metal wall mounting kit consisting of two L-shaped brackets, two screws, and two nuts.</p>
5000-WMDRK	5000 Series Wall Mounting DIN Rail Kit	 <p>A metal wall mounting kit consisting of two DIN rail brackets, two screws, and two nuts.</p>
5000-DCC	5000 Series Deluxe Carrying Case	 <p>A blue and grey soft carrying case with a handle and a TSI logo on the front.</p>
5000-PC-ADV	5000 Series PC Software (Advanced version)	See following page for more details

# FLO-Sight PC Software

Get the most out of your 5000 Series Gas Flow Multi-Meter with TSI's FLO-Sight™ PC Software.

Couple the real-time data visualization of FLO-Sight PC software with the fast response rate of our 5000 Series Flow Meters to gain valuable insights and truly understand your flows.

See your flows as you have never seen them before with FLO-Sight software.



FLO-Sight software has these basic features:

- Real-time display of all measurement parameters
- Min, max, and average readings
- Advanced meter configuration
- Volume measurements with user-set begin/end triggers (5310, 5320, 5330 models)

FLO-Sight software advanced features include:

- Real-time graphing
- Data logging, download, and file management
- Alerts set for any parameter
- Multiple meter operation

A free trial of FLO-Sight software's advanced features is included with the Series 5300 Flow Meter. The advanced version can be purchased through the software itself or at [www.tsi.com](http://www.tsi.com).

For more information, contact: [answers@tsi.com](mailto:answers@tsi.com).



UNDERSTANDING, ACCELERATED

**TSI Incorporated** – Visit our website [www.tsi.com](http://www.tsi.com) for more information.

**USA** Tel: +1 800 680 1220

**India** Tel: +91 80 67877200

**UK** Tel: +44 149 4 459200

**China** Tel: +86 10 8219 7688

**France** Tel: +33 1 41 19 21 99

**Singapore** Tel: +65 6595 6388

**Germany** Tel: +49 241 523030

P/N 6011691 Rev B

©2019 TSI Incorporated

Printed in U.S.A.

