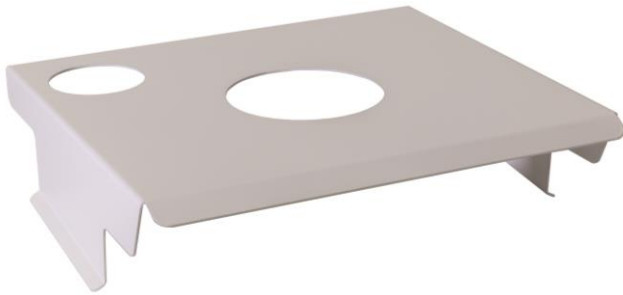


# INSTALLING THE SOLAR SHIELD ONTO DUSTTRAK™ ENVIRONMENTAL MONITORS

## INSTALLATION GUIDE

This guide will help you to quickly install the Solar Shield onto the various DustTrak™ Environmental monitors.



### Installing the Solar Shield (854048)

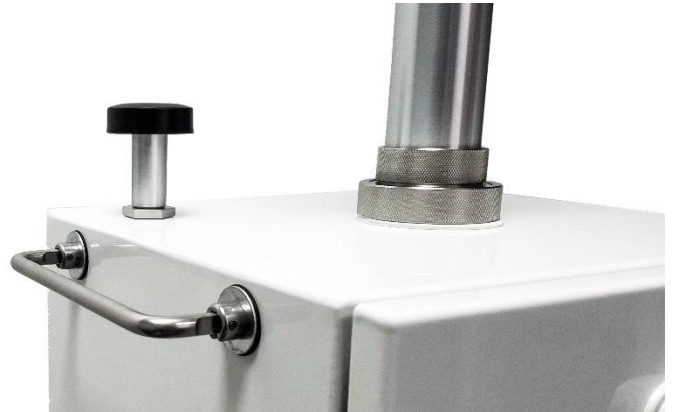
1. Remove water trap bottle from the inlet.



#### NOTE

It is assumed that the inlet assembly has already been attached to the DustTrak Environmental monitor.

2. Pull handles up.



3. Install heat shield over the inlet and rest it on the handles.



4. Flip handles down to secure shield.



5. Reattach water trap bottle to the inlet.

**NOTE**

For best results, use PTFE Thread Sealant Tape on the water bottle threads.

---

## Specifications

The solar shield is used to prevent elevated temperatures from occurring inside the enclosure, because of exposure to direct sun light.

Recommended Environment.....	>104°F (40°C)
------------------------------	---------------



UNDERSTANDING, ACCELERATED

TSI Incorporated – Visit our website [www.tsi.com](http://www.tsi.com) for more information.

<b>USA</b>	<b>Tel:</b> +1 800 874 2811	<b>India</b>	<b>Tel:</b> +91 80 67877200
<b>UK</b>	<b>Tel:</b> +44 149 4 459200	<b>China</b>	<b>Tel:</b> +86 10 8219 7688
<b>France</b>	<b>Tel:</b> +33 1 41 19 21 99	<b>Singapore</b>	<b>Tel:</b> +65 6595 6388
<b>Germany</b>	<b>Tel:</b> +49 241 523030		

