

NON-CYLINDRICAL AND -60 PROBE SETUP

FREQUENTLY ASKED QUESTION #8

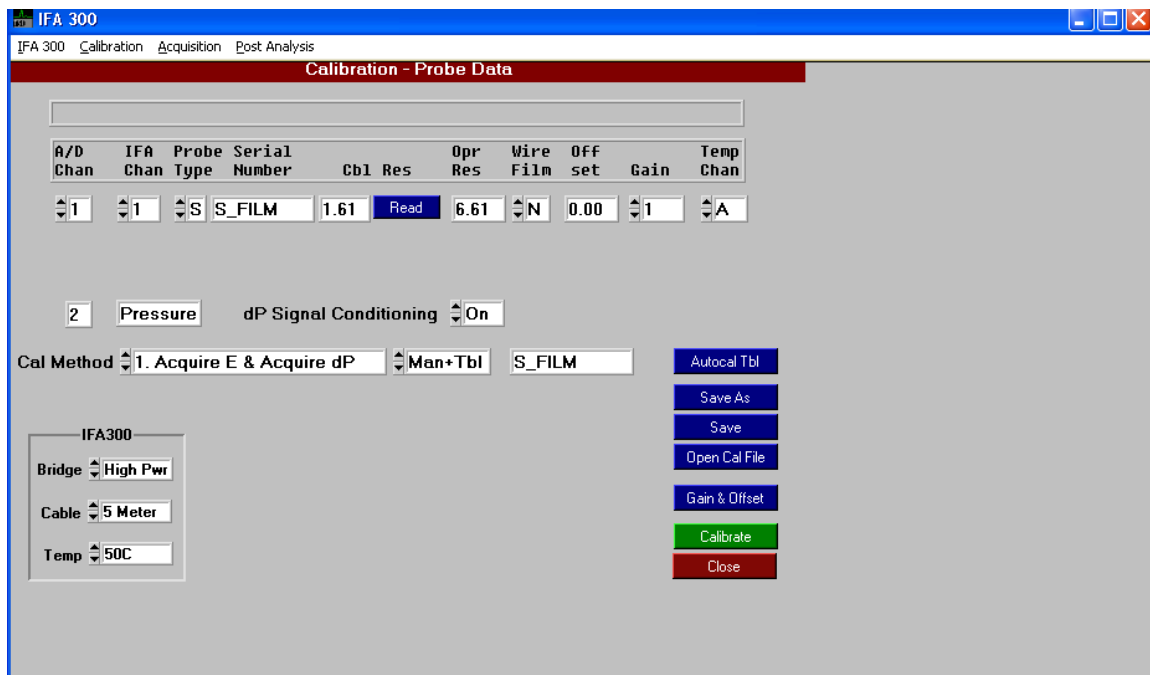
Question:

I am trying to run my 1210-60 probe using the IFA300 and ThermalPro. For some reason, the program “freezes” when I start taking the first calibration point. What could be the problem?

Answer:

The -60 probe (e.g., 1210-60) and the non-cylindrical probes (cone, wedge, etc...) require a large amount of current to run, since the amount of material comprising them is so great. For this reason, it should be selected as “N - Non-Cylindrical” in the probe data setup screen under “Wire/Film.” In addition, the Bridge should be set to “High Pwr.”

Wire/Film: “N” Non-Cylindrical
Bridge: “High Pwr” High Power Bridge





UNDERSTANDING, ACCELERATED

TSI Incorporated – Visit our website www.tsi.com for more information.

USA	Tel: +1 800 874 2811	India	Tel: +91 80 67877200
UK	Tel: +44 149 4 459200	China	Tel: +86 10 8251 6588
France	Tel: +33 4 91 11 87 64	Singapore	Tel: +65 6595 6388
Germany	Tel: +49 241 523030		